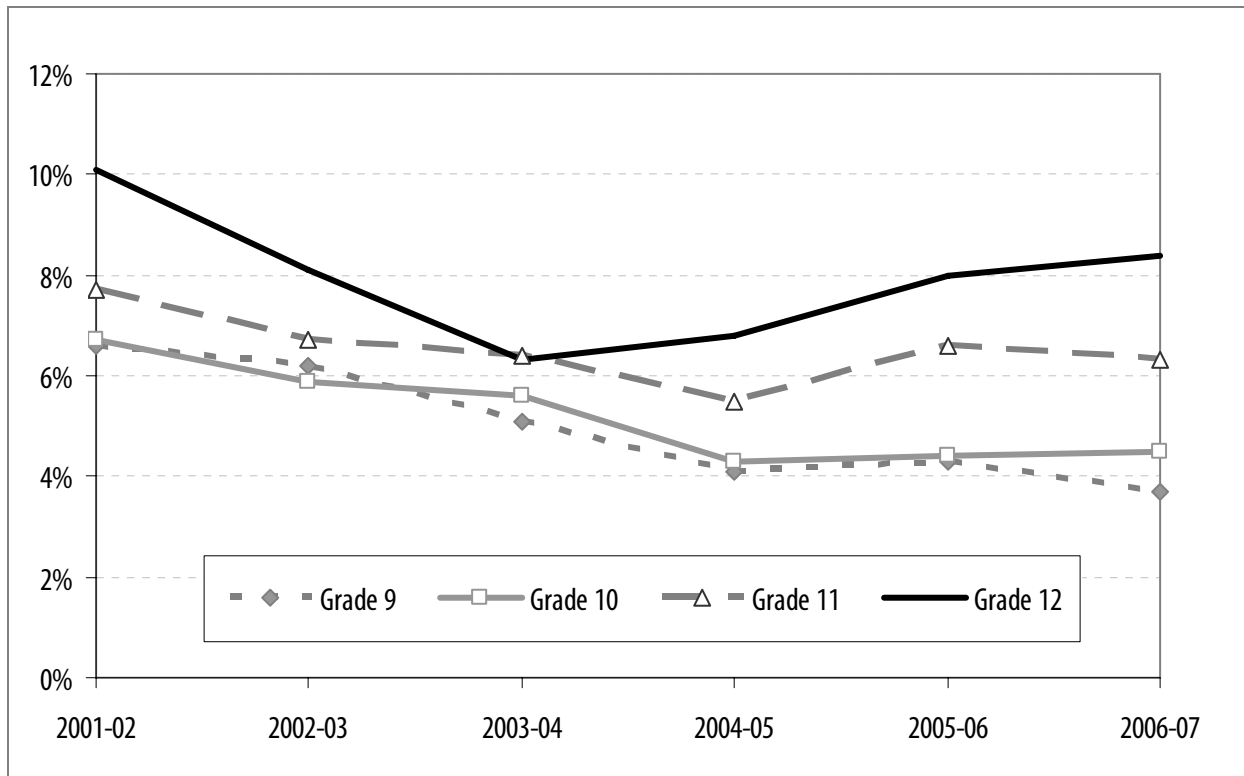


# DROPOUT RATES BY GRADE

**There were a total of 15,921 students classified as dropouts** from Washington public high schools in 2004-05. Although the dropout rate is generally highest in grade 12, over 11,000 students dropped out in grades 9 through 11, representing 71 percent of all dropouts that year. Over half of these students were classified as dropouts because they could not be located anywhere in the system.

## DROPOUT RATES BY GRADE, GRADES 9-12



### RELATED DATA:

ANNUAL DROPOUT RATES	Grade 9	Grade 10	Grade 11	Grade 12
2001-02	6.6%	6.7%	7.7%	10.1%
2002-03	6.2%	5.9%	6.7%	8.1%
2003-04	5.1%	5.6%	6.4%	6.3%
2004-05	4.1%	4.3%	5.5%	6.8%
2005-06	4.3%	4.4%	6.6%	8.0%
2006-07	3.7%	4.5%	6.3%	8.4%

**DEFINITION:**

A dropout is a student who leaves school for any reason, except death, before completing school with a regular diploma and who does not transfer to another school. If a student leaves the district without indicating he or she is dropping out, and the district is not contacted by another school requesting student records (even if the district was verbally told the student was transferring), the student has an “unknown” enrollment status. The General Educational Development (GED) credential is not considered to be a regular diploma.

The dropout rate is calculated as the number of students who are dropouts, unknown status, or GED completers divided by the total number of students served (less transfers and students in juvenile detention).

**ADDITIONAL DETAIL:**

<b>ANNUAL DROPOUT RATES, 2006-07</b>	<b>Grade 9</b>	<b>Grade 10</b>	<b>Grade 11</b>	<b>Grade 12</b>	<b>All Grades</b>
<b>All Students</b>	<b>3.7%</b>	<b>4.5%</b>	<b>6.3%</b>	<b>8.4%</b>	<b>5.5%</b>
American Indian and Alaska Native (non-Hispanic)	8.5%	10.1%	13.0%	16.2%	11.4%
Asian and Pacific Islander (non-Hispanic)	3.4%	2.7%	3.2%	5.7%	3.7%
Black/African-American (non-Hispanic)	6.6%	6.9%	8.5%	13.4%	8.4%
White (non-Hispanic)	2.7%	3.7%	5.8%	7.7%	4.9%
Hispanic	6.9%	7.2%	8.9%	10.5%	8.1%
Special education	4.4%	5.8%	8.5%	11.3%	7.0%
Limited English	7.6%	7.4%	9.3%	11.5%	8.5%
Low income	5.2%	5.9%	8.4%	11.4%	7.1%
Female	3.4%	3.9%	5.5%	7.1%	4.9%
Male	4.0%	5.0%	7.0%	9.7%	6.2%

**SOURCE:** Office of the Superintendent of Public Instruction (OSPI)