

# ERDC Postsecondary Data Strategy Partner Feedback Session

September 4, 2025

# Agenda

- ▶ Introduction
- ▶ Background on ERDC's Postsecondary Data Strategy
- ▶ Gathering Your Feedback
  - ▶ Recommendations
  - ▶ Framework
- ▶ Q&A
- ▶ Next Steps

# Introduction

# A Note about Recording

- ▶ **We will not video record** or digitally transcribe this meeting.
- ▶ **We will take notes**, but will not directly identify you or your institution. (Instead, we may use language like “legislative staff” or “researcher.”)
- ▶ **Slides and notes** will be made available to you soon.
- ▶ We will release **a feedback summary** once we have collected and reviewed what we receive.

# A Reminder about Public Disclosure

- ▶ ERDC is part of a state agency, which makes us subject to the Public Records Act. Though many of ERDC's records (such as P20W data) are exempt from public disclosure, records created at this meeting are not.
- ▶ What that means for you:
  - ▶ **What's shared at this meeting could become public, especially what you put in chat.**
  - ▶ **As noted, we will not directly identify you in the notes.**

# Welcome! Thank you for being here!



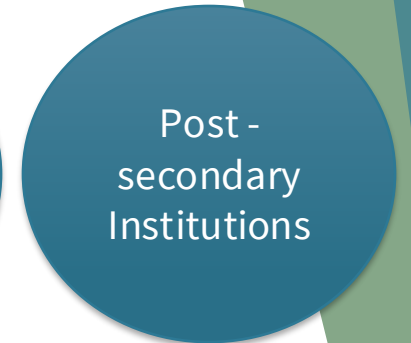
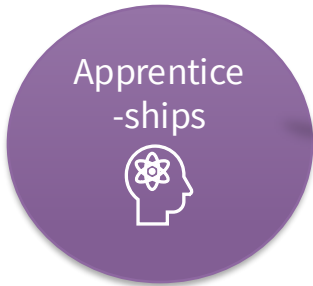
- ▶ Please introduce yourself in the chat, and share:
  - ▶ **Your Name**
  - ▶ **Your Title**
  - ▶ **Your Organization**
  - ▶ Anything else you'd like to share about yourself.

# Background

# What is the Education Research and Data Center (ERDC)?

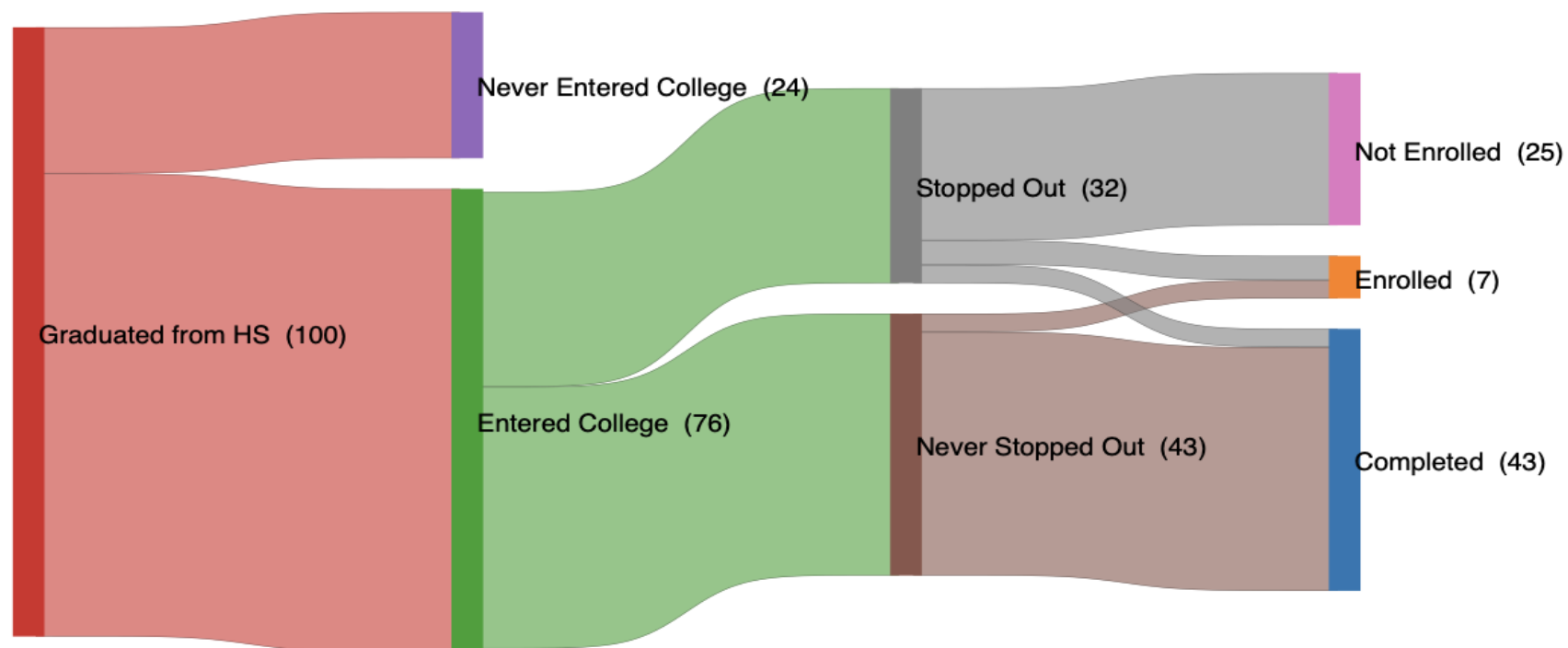
- ▶ ERDC was created in the Office of Financial Management (OFM) by legislation ([RCW 43.41.400](#)) in 2007 to:
  - ▶ Identify the critical research and policy questions and the data to answer them;
  - ▶ Assemble, link, analyze education and workforce data;
  - ▶ Provide analysis and research focusing on student transitions;
  - ▶ Make data available to the education agencies and institutions; and,
  - ▶ Provide analysis and data that ensure the interests of the education and fiscal committees of the legislature are served.

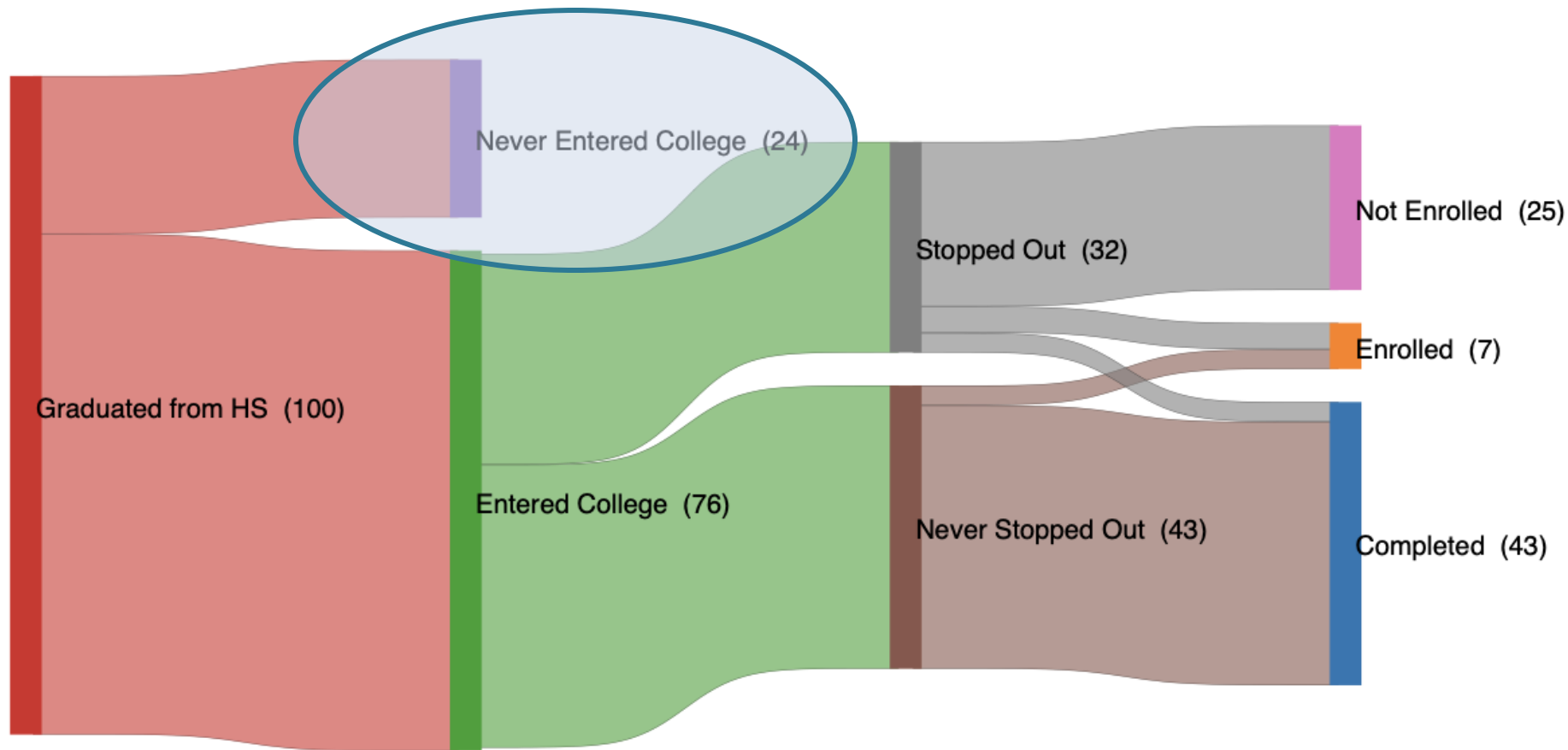




# Why Create a Postsecondary Data Strategy?

- Postsecondary **pathways abound**, and we want to be strategic about how we collect and handle the data they produce.

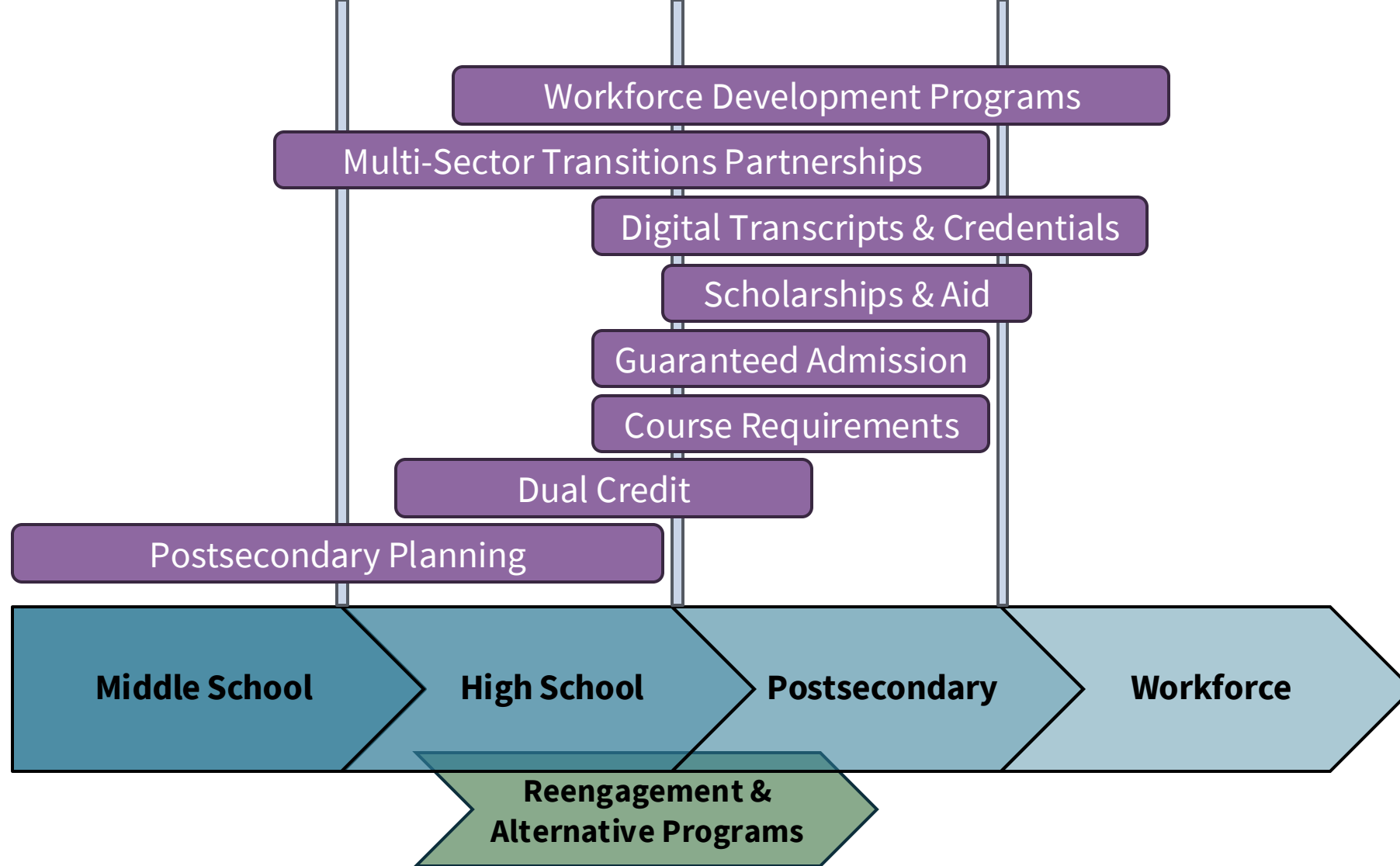




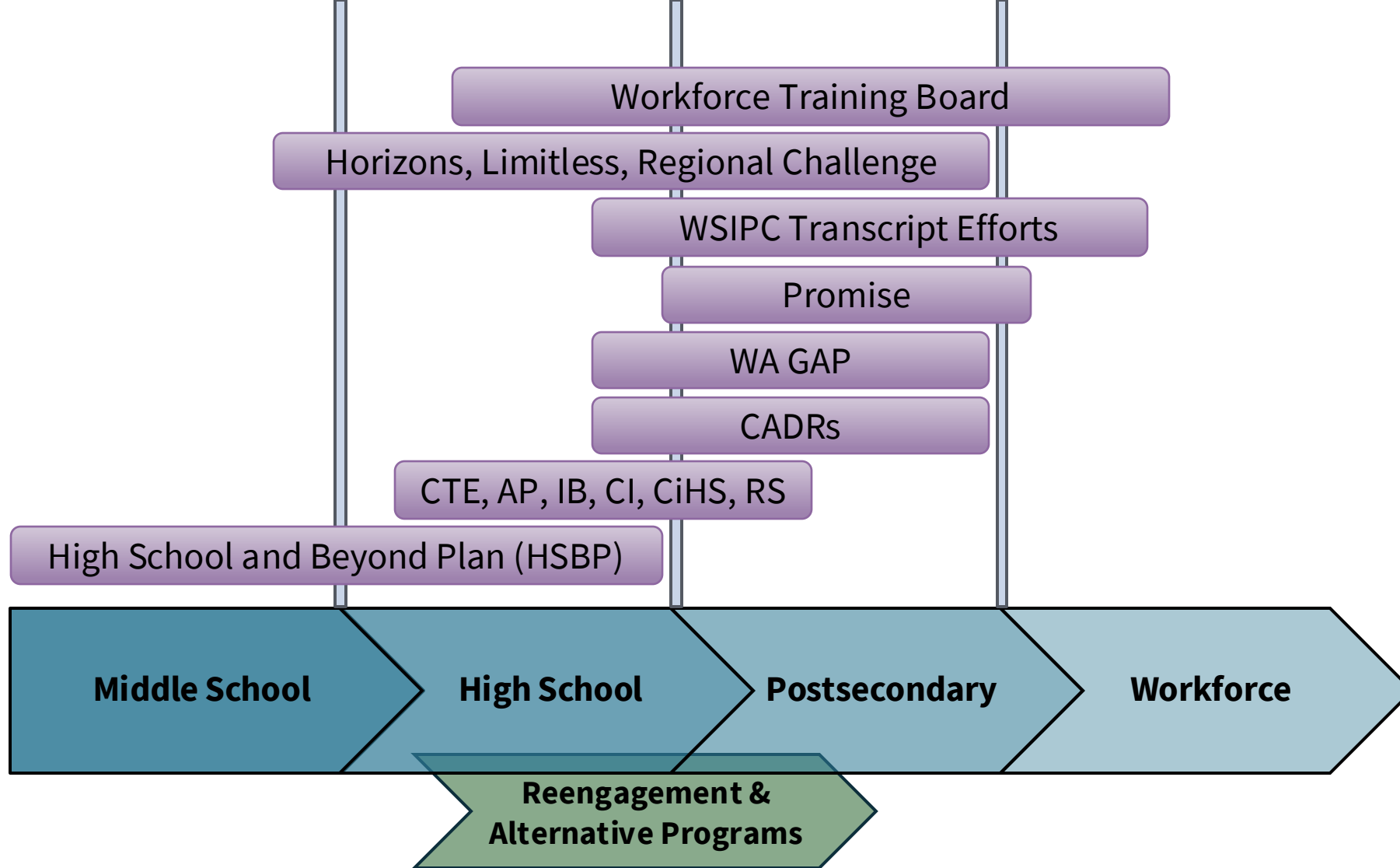
## The Flow of High School to Postsecondary Transitions

Percentage of Graduating Classes of 2013 and 2014 who Completed, are Enrolled, Stopped Out, or Never Attempted College 7 Years from High School Graduation

*Stop-out = enrolled in at least one college term, but did not finish a degree and were not enrolled at year 7*

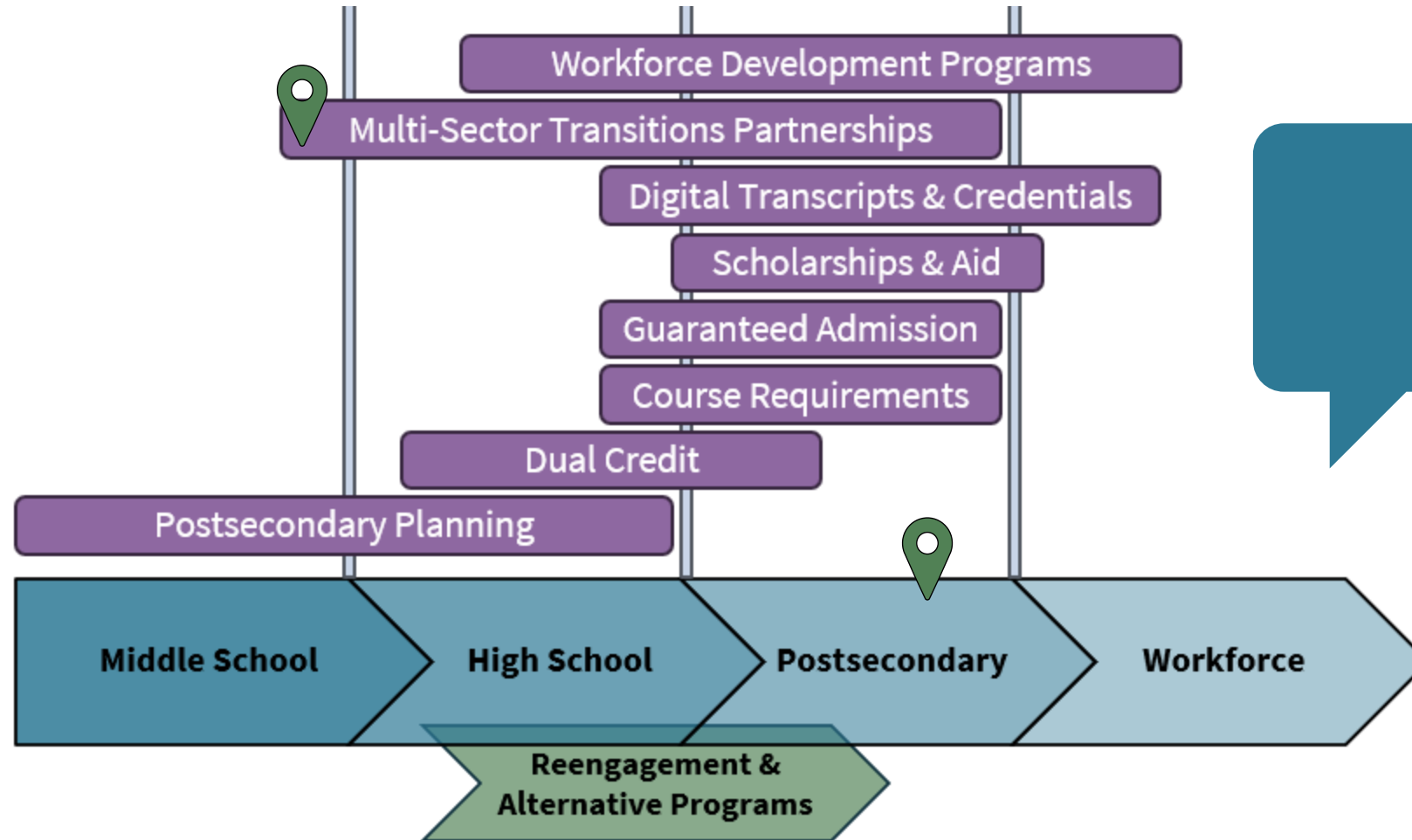


## The Landscape of WA Postsecondary Initiatives



## The Landscape of WA Postsecondary Initiatives – Examples

# Where do you see yourself here?



**Tell us in  
the chat.**

# Why Create a Postsecondary Data Strategy?

- ▶ Postsecondary data is **in high demand** at ERDC, both by the Legislature and data requesters.



- ▶ **76%** of statutes about ERDC involve postsecondary data
- ▶ **68%** of ERDC data requesters\* want postsecondary data

*\*In 2023*

# Why Create a Postsecondary Data Strategy?

- ▶ ERDC already **has a significant amount of postsecondary data** and plans to receive more.



▶ **Higher Education**



▶ **Apprenticeship, Vocational, Etc.**



▶ **Financial Aid**



▶ **Workforce**



# Our Strategy to Date

- ▶ Received Gates Foundation funding
- ▶ Created strategy roadmap and goals
- ▶ Produced draft report, postsecondary definition, recommendations, data framework in first phase
- ▶ Now, gathering external feedback as second phase

# Strategy Roadmap

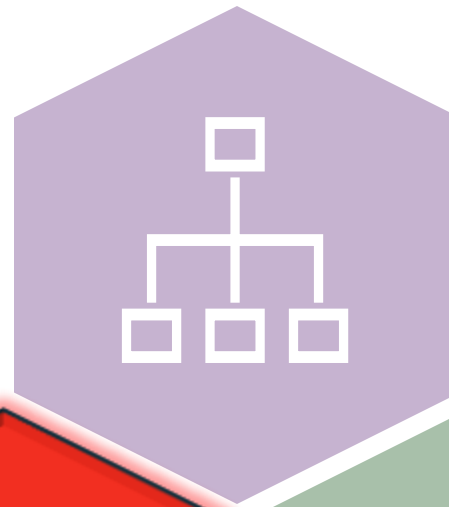
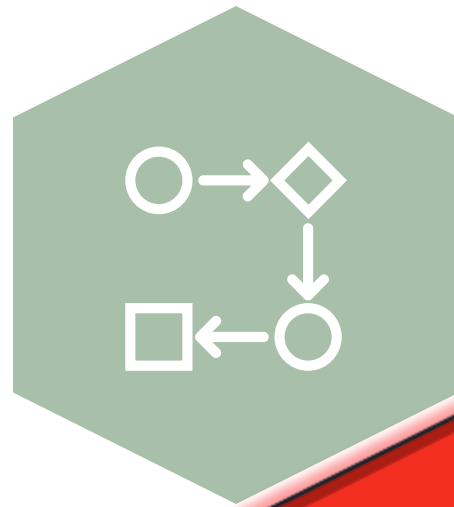


**Landscape  
Analysis**

**External Review**  
*with Partners & Community*

**Product & Resource  
Development**  
*Data Framework, Resources,  
Manuals, Dashboards,  
Collections, and more*

# Strategy Roadmap



## **Landscape Analysis**

## **External Review** *with Partners & Community*



## **Product & Resource Development**

*Data Framework, Resources,  
Manuals, Dashboards,  
Collections, and more*

# Strategy Goals

1

## Identify

postsecondary pathways, using data from ERDC's P20W system and other data not yet included

2

## Harmonize

postsecondary data across our system – illustrating connections and transitions despite disparate data sources

3

## Represent

postsecondary data in innovative and accessible ways, increasing data use and research

# Feedback

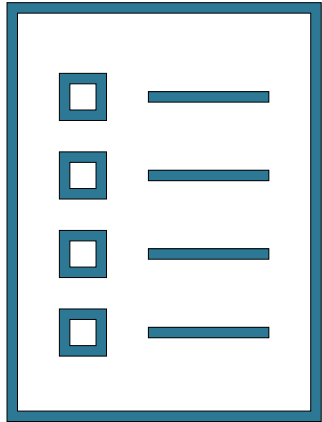
# Session Guidelines



- ▶ Listen for understanding and with respect.
- ▶ Take space, make space.
- ▶ Acknowledge biases, inequities, and assumptions.
- ▶ Challenge ideas, not people.
- ▶ Maintain confidentiality.
- ▶ Do your best.

Source: [Cornell Center for Dialogue & Pluralism](#) and internal community guidelines

# About the Recommendations



- ▶ **A list of potential next steps ERDC could take to improve access to and use of postsecondary data in its P20W system**
- ▶ Generated through internal and external assessment
- ▶ We want to know: **your top priorities**

# We're going to ask you to...

<b>Rank</b>	Rank the recommendations
<b>Explain</b>	Explain why you chose your top recommendations
<b>Re-Rank</b>	View a collapsed version of the recommendations and then select your top one



# The Recommendations

1. Investigate new postsecondary data sources to include in P20W
2. Produce more detailed documentation about ERDC postsecondary data
3. Refine existing ERDC postsecondary data dashboards
4. Create new ERDC postsecondary data dashboards
5. Streamline annual legislative reporting of postsecondary data into more accessible data products
6. Create a postsecondary data mart
7. Release an aggregate postsecondary dataset
8. Launch a postsecondary data users work group
9. Serve as central location for and curator of postsecondary data resources
10. Spotlight current and emerging postsecondary trends using ERDC data

# Prioritizing Recommendations

- ▶ **Instructions:** Rank in order of importance by dragging or using the arrows to shift up/down until the recommendations you consider most important are at the top, and least important at the bottom. Note: you may need to scroll to see them all.
- ▶ **Terms:**
  - **Data products** include a wide variety of items, such as publications, reports, data dashboards, and data marts.
  - **Data marts** make curated datasets prepared for the most common analyses available to approved users in a single location and are often used to feed ERDC dashboards.
  - **Dataset (aggregate)** would be a standard postsecondary data file created with aggregate, non-identifying, FERPA-compliant data and intended for analysis and research.
  - **Data users work group** would be a regular meeting of those who use ERDC data, distinct from governance and technical meetings.
  - **Data resources** support data use and include documentation, manuals, use cases, tutorials, data dictionaries, etc.

# Sharing & Explaining Your Priorities

## ► Instructions:

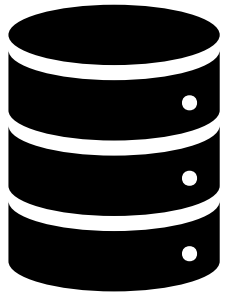
- Think about which recommendations you placed at the top, and why.
- Start writing about this in the chat **...but do NOT send it yet.**
- I'll let you know when to enter your comment; we'll all do it together.



- This exercise, known as a “waterfall chat,” allows time to reflect on your own response before interacting with others’ responses.

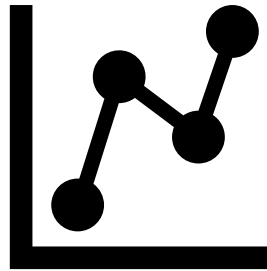
# From Recommendations to Roles

**Collector**



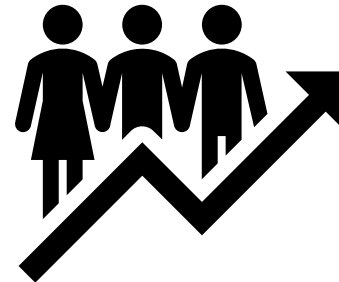
Rec. #1

**Developer**



Rec. #2-7

**Convener**



Rec. #8-10

# From Recommendations to Roles

## Collector

Collecting,  
stewarding, governing  
ever-growing data  
collections

## Developer

Developing new data  
products built on the  
data collections it  
stewards

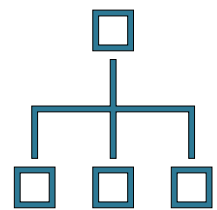
## Convener

Bringing people and  
resources together to  
make sense of data

# Your Preference on ERDC's Top Role

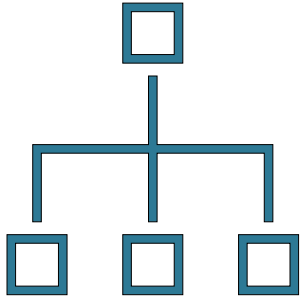


- ▶ **Instructions:** Select the role you think ERDC is best positioned to fill from the options available in the poll.
- ▶ **Note:** ERDC fulfills all these roles, but we are interested in the one you value most highly.



# Data Framework

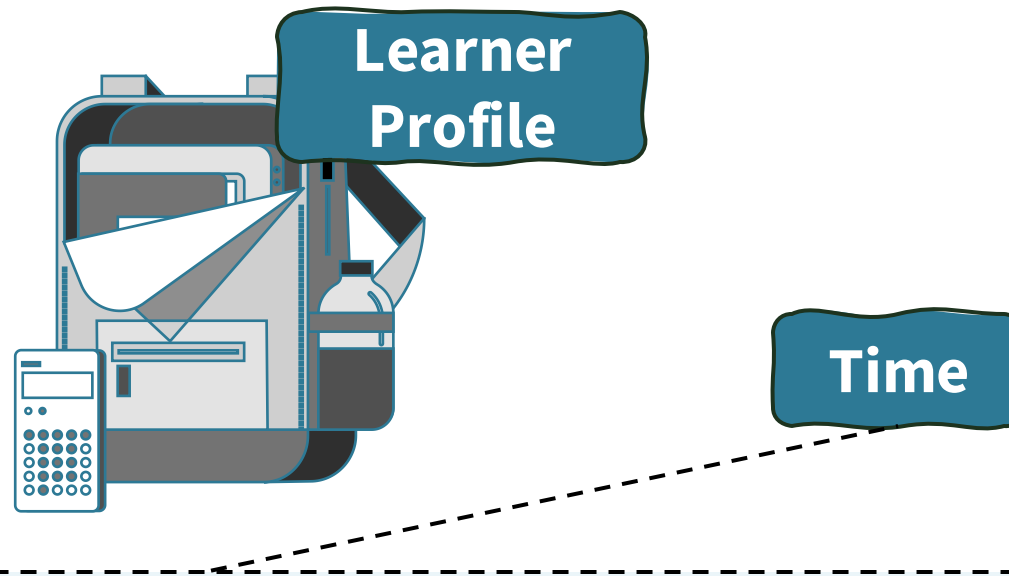
# About the Framework



- ▶ **A way of guiding users through the expansive postsecondary data landscape in a simplified format**
- ▶ Based on ERDC's current postsecondary data, the broader scope of postsecondary data, and related frameworks such as [Education-to-Workforce](#) and the [Postsecondary Data GPS](#)
- ▶ We want to know: **how this works for you, and how you see yourself using it**



# Postsecondary Data Framework



**Access**

**Intent**

**Progress**

**Supports**

**Outcomes**

The diagram shows a stylized illustration of a building with multiple windows and doors. A dark blue button labeled 'Institutional Characteristics' is positioned to the right of the building, connected to it by a line.

**Institutional  
Characteristics**

# About the Framework – Continued

- ▶ Additional notes about the framework:
  - ▶ **Work in progress**
  - ▶ **Snapshot in time**
  - ▶ What the legend means:
    - ▶ **Complete:** refers to data ERDC has, though the cohort may not be exhaustive
    - ▶ **Partial:** may have improvements planned; may apply to some data sources but not others; and/or, may rely on public data sources – not ERDC's P20W
    - ▶ **Not Available:** no data currently at ERDC

## Legend

Complete

Partial

Not Available

### Access

Preparation

Application &  
Admission

Advising

### Intent

Enrollment

Attendance  
Pattern

Desired Outcome

### Progress

Program Selection

Course-Taking

Credit  
Accumulation

Skills Development

Perception

### Supports

Financial Aid

Basic Needs Aid

Additional Services

### Outcomes

Credential

Employment

Economic Return

Quality of Life

Community  
Engagement



## Learner Profile

Demographics

Background

Employment Status

Economic Status

Personal Wellbeing

## Institutional Characteristics

Sector

About

Resources

Type

Population

Policies

### Legend

Complete

Partial

Not Available

# Breakout Discussion

- ▶ Your breakout will be facilitated by an ERDC staff member.
- ▶ We'll ask you questions about:
  - ▶ **what you like,**
  - ▶ **what you'd change,** and
  - ▶ **how you might use the framework.**



# Q&A

# Next Steps

# More Ways to Engage with the Strategy

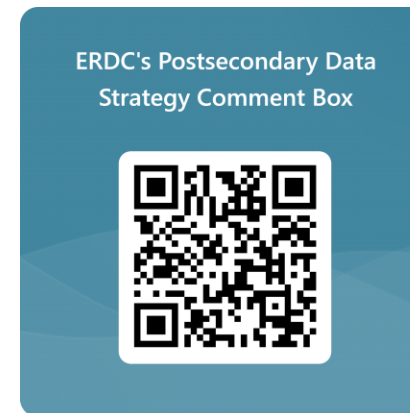
## ► Use our comment box

- [erdc.wa.gov/postsecondary-data-strategy#comment](https://erdc.wa.gov/postsecondary-data-strategy#comment)
- Or scan the QR code to the right

## ► Attend office hours

- September 22, 11am-1pm

## ► Get in touch





# Get in touch

- ▶ **Email Kaitlin at [Kaitlin.Throgmorton@ofm.wa.gov](mailto:Kaitlin.Throgmorton@ofm.wa.gov)**
  - ▶ Sr. Data Governance & Operations Specialist at ERDC
  - ▶ Postsecondary Data Strategy Lead
- ▶ **Find and register for upcoming events, get updates, download materials and more at:**  
**[erdc.wa.gov/postsecondary-data-strategy](https://erdc.wa.gov/postsecondary-data-strategy)**